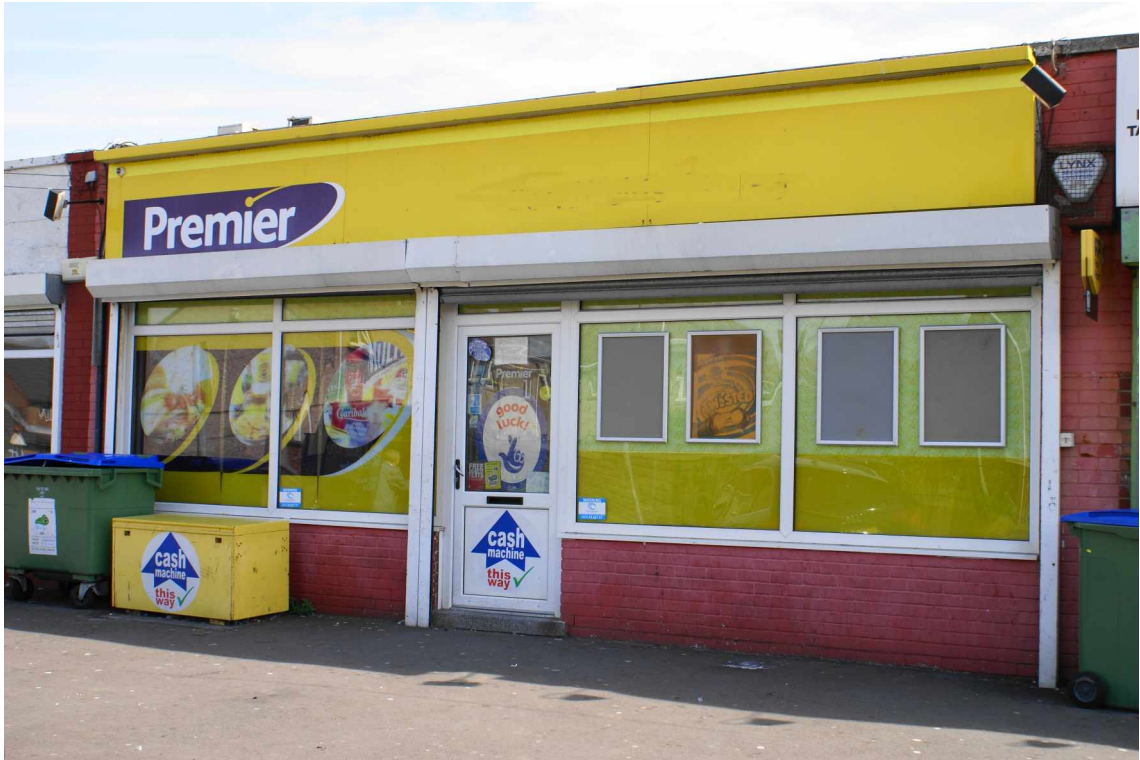


## 'Premier Lock-Up Convenience Stores /Off License'

West Glamorgan CS 154



**Price**  
**Business & Property: £195,000**  
**plus sav**

**Business:** A busy, well established lock-up convenience stores operating under the Premier banner. The business has the benefit of an off license, full lottery service, Paypoint, ATM machine and a dedicated newspapers and magazines section.

Operated by the vendor and family members, the business is easily managed.

**Location:** The business is located in a densely populated area amongst a small parade of shops. There are parking bays to the front.

### **Financial Details:**

Weekly Sales: £10,000 plus Lottery, Paypoint and ATM machine commissions

**Accounts:** Will be made available once the business has been viewed.

### **Opening Hours:**

7 days 6.30am to 9.00pm

### **Tenure:**

Long Leasehold approx.50 years remaining  
Peppercorn ground Rent: £250 per year  
Rates: £TBA per year



**Viewing: This is a confidential sale. Please respect the vendor's wishes.** To ensure that your viewing arrangements are trouble free and our client can arrange to have the necessary time to show you around and answer your questions, please telephone this office on 01792 424411 let us know when you would like to visit and we will make the arrangement.



**Offers:** All offers are for the long leasehold, property, goodwill, fixtures and fittings and should be made to this office.

**Finance:** If you need help or advice please let us know and we will put you in touch with our Finance Department specialising in helping fund purchase of these types of businesses.

**Premises:**

Good sized sales shop (approx.670 sq ft) with a comprehensive range of trade fittings and fixtures including displays and racking. Counter with electronic till. The shop is fitted with a suspended ceiling with integral lighting, ceiling mounted air conditioning and steel shutters to the windows and door.

Equipment includes 2No 8feet display chest freezers, an 8feet dairy cabinet display chiller, 3No upright soft drinks display and an Ice cream display chest freezer.

To the rear of the shop there is a storeroom( approx.250 sq ft) , a kitchen, toilet with shower and wash hand basin and a further room used as a day room.